

PR903 Chef's Long Sleeve Coolchecker® Jacket With Mesh Back Panel

Description

A long-sleeve chef's jacket constructed with our very own Coolchecker® fabric. The centre back panel is made from the Coolchecker® fabric which offers exceptional moisture management and wicking properties so chef stays fresh and cool during service. A wrap over fastening with ten self-fabric buttons, a mandarin collar and a useful double pen pocket on the left arm.

Product Features:

- Coolchecker® back panel
- Double pen pocket
- Mandarin collar
- Self-fabric button fastening

Available In:

XS, S, M, L, XL, 2XL

Certifications:

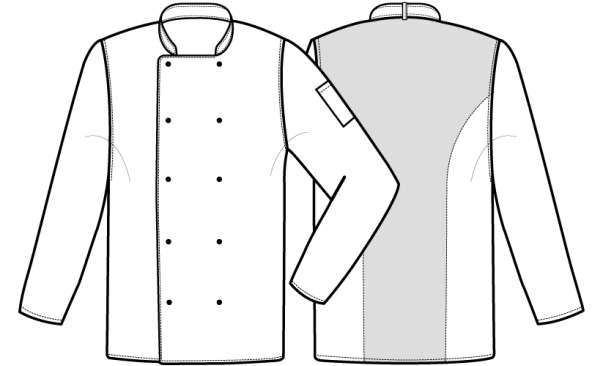


Colours:

| Colour | Pantone | C | M | Y | K |
|--------|---------|---|---|---|-----|
| Black | Black c | 0 | 0 | 0 | 100 |
| White | White | 0 | 0 | 0 | 0 |

Fabric:

65% Polyester, 35% Cotton Twill, 170gsm.



Suggested Decoration:

Screen Print, Transfer Print, Embroidery

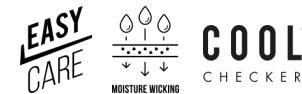
Country of Origin:

Bangladesh

Commodity Code:

6211331000

Features:



Wash Care:



Carton Information:

| Sizes | Carton | Pack | SKU's | Carton Weight | Carton Dimensions |
|-----------|--------|------|-------|---------------|--------------------|
| All Sizes | 24 | 6 | 12 | 10kg approx | 60cm x 40cm x 20cm |

Garment Sizes:

| Call size | XS | S | M | L | XL | 2XL |
|-----------------|----|-----|-----|-----|-----|-----|
| Chest to fit" | 30 | 34 | 38 | 42 | 46 | 50 |
| Chest to fit cm | 77 | 87 | 96 | 107 | 117 | 126 |
| Chest actual cm | 96 | 104 | 112 | 120 | 128 | 136 |
| Back length cm | 76 | 76 | 76 | 76 | 76 | 76 |