

## PR902 Chef's Coolchecker® Short Sleeve Jacket

### Description

A short sleeve chef's jacket constructed with our very own Coolchecker® fabric. The centre back panel is made from the Coolchecker® fabric which offers exceptional moisture management and wicking properties so chef stays fresh and cool during service. A wrap over fastening with ten self-fabric buttons with a mandarin collar and a useful double pen pocket on the left arm.

### Product Features:

- Ten button wrap over fastening
- Mandarin collar
- Double pen pocket
- Coolchecker® back panel

### Available In:

XS, S, M, L, XL, 2XL

### Certifications:

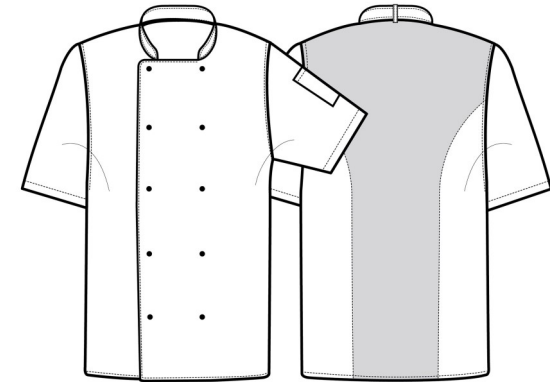


### Colours:

Colour	Pantone	C	M	Y	K
Black	Black c	0	0	0	100
White	White	0	0	0	0

### Fabric:

65% Polyester, 35% Cotton  
170gsm.



### Suggested Decoration:

Screen Print, Transfer Print, Embroidery

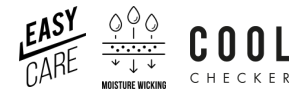
### Country of Origin:

Bangladesh

### Commodity Code:

6211331000

### Features:



### Wash Care:



### Carton Information:

Sizes	Carton	Pack	SKU's	Carton Weight	Carton Dimentions
All Sizes	24	6	12	10kg	60cmx40cmx20cm

### Garment Sizes:

Call size	XS	S	M	L	XL	2XL
Chest to fit"	30	34	38	42	46	50
Chest to fit cm	77	87	96	107	117	126
Chest actual cm	96	104	112	120	128	136
Back length cm	76	76	76	76	76	76