

## PR352 'Maxton' Check - Women's Long Sleeve Shirt

### Description

An attractive long sleeve Gingham patterned shirt in strong contrast colours. Featuring a single buttoned cuff and sleeve guard. Styled with a narrow soft collar with a button down options of the underside. An easycare and durable women's checkered shirt that gives a charming, vintage-chic approach to front-of-house service.

### Product Features:

- Single button cuff and sleeve guard
- Hidden button down collar
- Easycare fabric

### Available In:

XS, S, M, L, XL, 2XL

### Certifications:

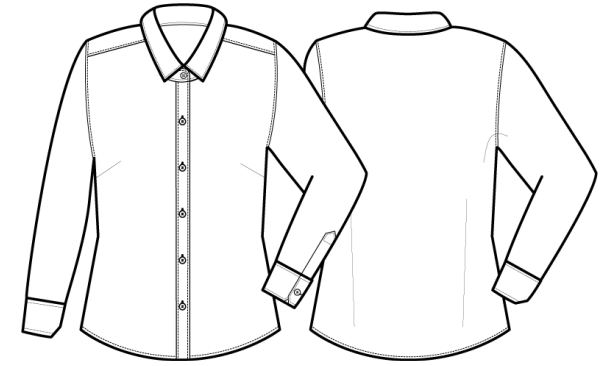


### Colours:

Colour	Pantone	C	M	Y	K	
Black/Red	Black	Black c	0	0	0	100
	Red	201c	7	100	68	32
Light Blue/White	Light Blue	2707c	20	6	0	0
	White	White	0	0	0	0
Navy/White	Navy	533c	95	72	15	67
	White	White	0	0	0	0
Silver/White	Silver	429c	21	11	9	23
	White	White	0	0	0	0
Steel/Black	Steel	431c	45	25	16	59
	Black	Black c	0	0	0	100

### Fabric:

65% Polyester, 35% Cotton, Yarn Dyed Poplin, 110gsm.



### Suggested Decoration:

Screen Print, Transfer Print, Embroidery

### Country of Origin:

Bangladesh

### Commodity Code:

6206 30 0000

### Features:



### Wash Care:



### Carton Information:

Sizes	Carton	Pack	SKU's	Carton Weight	Carton Dimensions
All Sizes	24	6	30	8kg approx	60cm x 40cm x 15cm

### Garment Sizes:

Size	8	10	12	14	16	18
Bust to fit"	33	35	37	39	41	43
Bust to fit cm	84	89	94	99	104	109
Bust actual cm	92	97	102	107	112	117
Call size	XS	S	M	L	XL	2XL
Back length cm	65	66	67	68	69	70