

KARIBAN

REFERENCE : K226

SIZES : S_M_L_XL_XXL_3XL_4XL

COMPOSITION :

Main fabric : Combed cotton pique - 200 For body 100%cotton

Main fabric : Combed cotton pique - 200 For contrasted sleeve 100%cotton

WEIGHT :

Main fabric : 200 gsm

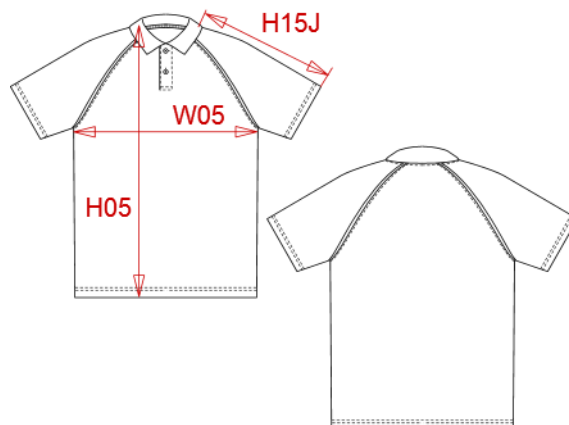
Main fabric : 200 gsm

TECHNICAL DETAIL :

Size 4XL only for Navy / White - Red / White and Black / Red

ARTICLE WEIGHT :

300 gr/pc



DESCRIPTION							
Français : Polo base ball							
English : Polo base ball							
Nederlands : Baseball polohemd							
Deutsch : Polo baseball							
Español : Polo baseball							
Italiano : Polo baseball							
Português : Polo de homem bicolor							

MEASUREMENT							
Description	S	M	L	XL	XXL	3XL	4XL
H05 (M) Hauteur totale / Total height	70	72	74	76	78	80	82
W05 (M) 1/2 largeur poitrine / 1/2 chest width	50	53	56	59	62	65	68
H15J (M) Longueur manche courte raglan / Raglan short sleeve length	35,25	36,75	38,25	39,75	41,25	42,75	44,25

CARE LABEL				

PACKING	
Box	25 pcs / box S-M => L:53cm W:39cm H:17cm GW:7.60kg NW:6.10kg L-XL => L:58cm W:41cm H:17cm GW:8.50kg NW:7.00kg XXL-3XL => L:63cm W:42cm H:17cm GW:9.10kg NW:7.60kg 4XL => L:65cm W:42cm H:17cm GW:9.50kg NW:8.00kg

COLORS	PANTONE SERIGRAPHIE
Red / White	200C / White
Navy / White	433C / White
Yellow / Black	1235C / Black
Black / Red	Black / 200C
Orange / White	1585C / White
Royal blue / Yellow	287C / 1235C
Sky blue / White	278C / White
Black / White	Black / White
Slate grey / Black	424C / Black
Forest green / White	5605C / White
White / Royal blue	White / 287C
Bordeaux / White	504C / White
Black / Green	Black / 7740C
Navy / Orange	433C / 1585C
Navy / Royal blue	433C / 287C