

# KARIBAN

**REFERENCE :** K6150

**SIZES :** S\_M\_L\_XL\_XXL\_3XL

**COMPOSITION :**

Fabric : Polyester taffeta 320T- 160 For garment, facings and inner loop on back middle 100%polyester

Fabric 2 : Synthetic fabric - Knitted polyester with PU coating - 300 For outside collar band and inner pocket pipings 100% polyester - Polyurethane coating

Lining : Polyester 210T PA coating - 60 For body lining, pocket sacks and inner binding 100%polyester

**WEIGHT :**

Fabric : 160 gsm

Fabric 2 : 300 gsm

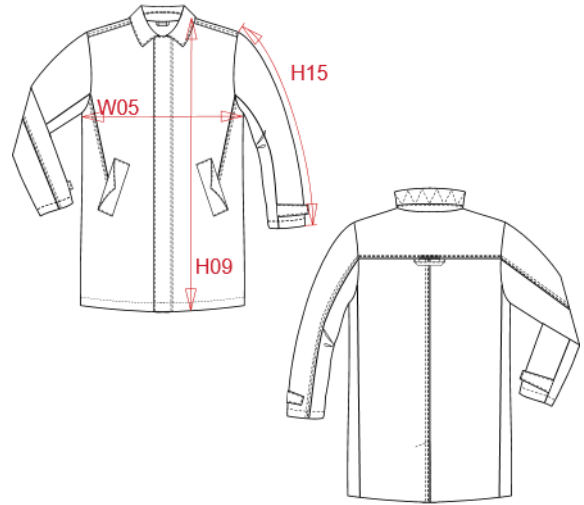
Lining : 60 gsm

**TECHNICAL DETAIL :**

Water repellant grade 3-4

**ARTICLE WEIGHT :**

515 gr/pc



DESCRIPTION
<b>Français :</b> Trench léger homme
<b>English :</b> Men's lightweight trenchcoat
<b>Nederlands :</b> Lichte trenchcoat heren
<b>Deutsch :</b> Leichter Herren-Trenchcoat
<b>Español :</b> Gabardina ligera para hombre
<b>Italiano :</b> Trench uomo leggero
<b>Português :</b> Gabardine leve de homem

COLORS	PANTONE SERIGRAPHIE
Navy	433C

MEASUREMENT							
Description	S	M	L	XL	XXL	3XL	
<b>H09 (M)</b> Hauteur totale devant / Front total height	93	95	97	99	101	103	
<b>W05 (M)</b> 1/2 largeur poitrine à 1.5cm de l'emmanchure / 1/2 chest width at 1.5cm below armhole	53	56	59	62	65	68	
<b>H15L (M)</b> Longueur manche longue / Long sleeve length	65	66	67	68	69	70	

CARE LABEL

PACKING	
Box	10 pcs / box S => L:60cm W:40cm H:18cm GW:5.9kg NW:4.8kg M => L:60cm W:40cm H:18cm GW:6.2kg NW:5.1kg L => L:60cm W:40cm H:18cm GW:6.3kg NW:5.2kg XL => L:60cm W:40cm H:18cm GW:6.6kg NW:5.5kg XXL => L:60cm W:40cm H:18cm GW:6.8kg NW:5.7kg 3XL => L:60cm W:40cm H:18cm GW:7.1kg NW:6kg