

# B&C Milano /women - SW 520



## MEDIUM FIT

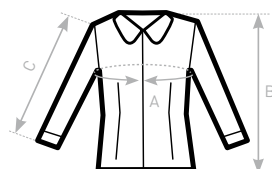
- 3/4 sleeved Poplin shirt
- Combed cotton/elastane stretch fabric
- Tone-on-tone buttons
- Feminine cut
- No pleat on back panel for optimal printing and embroidery
- 2 spare buttons
- 40°C washable



- 97% combed cotton - 3% elastane
- Poplin Stretch
- 135 g/m<sup>2</sup> **STRETCH**
- XS - S - M - L - XL - 2XL
- 1 pc/pack & 20 pcs/carton



**DUO**  
**CONCEPT**  
with B&C London



### SIZES [CM]

B&C MILANO /WOMEN SW 520	XS	S	M	L	XL	2XL	3XL
A HALF CHEST	44,2	46,6	49	51,4	53,8	56,2	-
B BODY LENGTH	62,3	63,8	65,3	66,8	68,3	69,8	-
C SLEEVE LENGTH	47,5	48	48,5	49	49,5	50	-



OEKO-TEX®  
CONFIDENCE IN TEXTILES  
STANDARD 100  
1501003 Certexbel  
Tested for harmful substances,  
www.oeko-tex.com/standard100