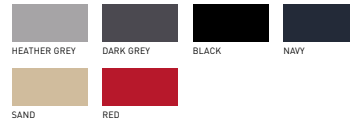


# B&C HEAVYMILL LSL - PU 423



## REGULAR FIT


- Long-sleeved Fine Piqué polo shirt
- 1x1 rib knitted collar
- 1x1 rib knitted cuffs with elastane
- 3-button placket reinforced with fusible interlining
- Matching colour buttons
- Side vents
- Necktape
- Side seams




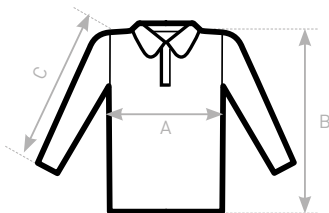
 100% pre-shrunk ring-spun **combed** cotton  
HEATHER GREY: 90% PRE-SHRUNK RING-SPUN COMBED COTTON - 10% VISCOSE

 Fine Piqué

 230 g/m<sup>2</sup>

 S - M - L - XL - 2XL

 10 pcs/pack & 40 pcs/carton



## SIZES [CM]

B&C HEAVYMILL LSL PU 423	XS	S	M	L	XL	2XL	3XL
A HALF CHEST	-	50	53,5	57	60,5	64	-
B BODY LENGTH FROM NECK POINT	-	70,5	73	75,5	78	80,5	-
C SLEEVE LENGTH	-	64	65	66	67	68	-

OEKO-TEX®  
CONFIDENCE IN TEXTILES  
STANDARD 100  
1501003 Certexbel  
Tested for harmful substances.  
www.oeko-tex.com/itandart100